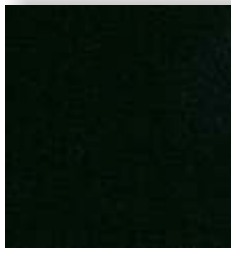


HAELVOET C COLLECTION

- Niroxx Classic (Crib5)
- Niroxx Lamé (Crib5)
Niroxx Lamé can only be used for upholstery of care beds, not suited for chairs
- Niroxx Ultra (Crib5)
- PUXX1 (Crib5)

NIROXX®

Classic



97001



43.013



43.033



43.035



43.036



43.042



43.020



43.054



43.056 *New*



43.038



43.011 *New*



43.025



43.006



43.057 *New*



43.007



43.008 *New*



43.043

**NEW
COLORS
INCLUDED!**



43.010 *New*



43.032



43.045



43.030



43.026 *New*



43.053



43.023



43.040 *New*



43.034



43.044



43.052



43.059 *New*



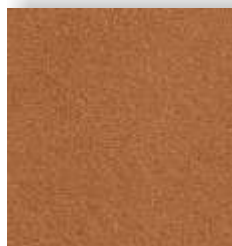
43.039



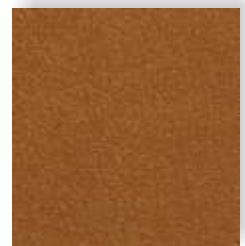
43.058 *New*



43.017



43.049



43.018



43.021



43.022



43.050



43.051



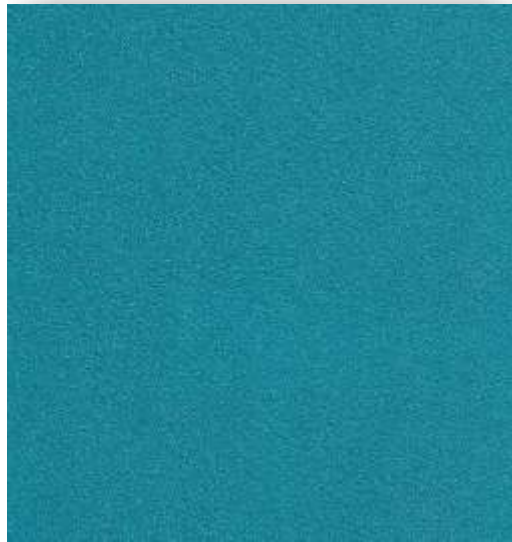
43.005



43.024



43.029



43.048



43.046



43.047



43.031

Attention: Niroxx Lamé can only be used for upholstery of care beds and is not suited for chairs



68026



68005



68006



68015



68027



68004



68003



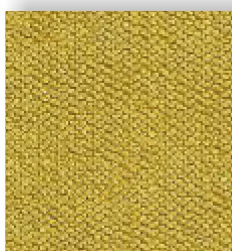
68010



68018



68002



68028

NIROXX
Lamé

Attention: Niroxx Lamé can only be used for upholstery of care beds and is not suited for chairs



68020



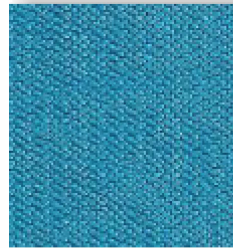
68017



68008



68022



68012



68023



68001



68014

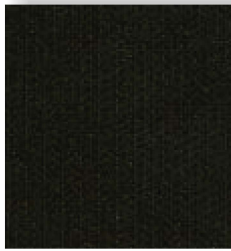


68024



68025

Attention: Niroxx Lamé can only be used for upholstery of care beds and is not suited for chairs



68009



68007



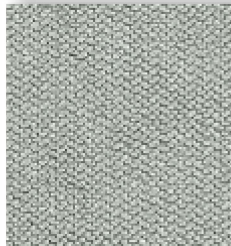
68011



68016



68013



68021



68019



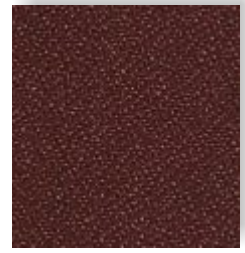
68013

Oniro textiles NIROXX Lamé Edition 1 - 2011 





54007



54013



54006



54005



54012



54015



54001



54014



54002

NIROXX

Ultra



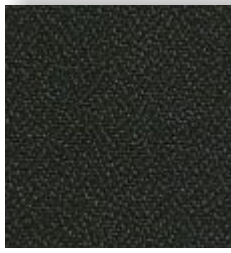
54004



54003



54018



54009



54008



54016



54017



54011



54010



54017



21.7609



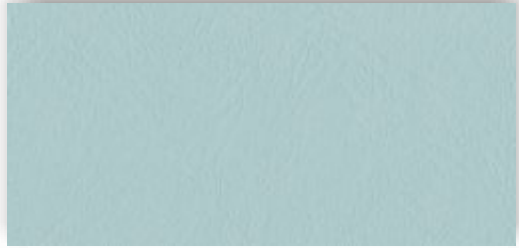
21.7610



21.9530



21.6798



21.8645 **New**



21.6239 **New**



21.7261



21.7606



21.7608



21.6491 **New**



21.5816

PU[®]XX nr.1





21.7709



21.7707



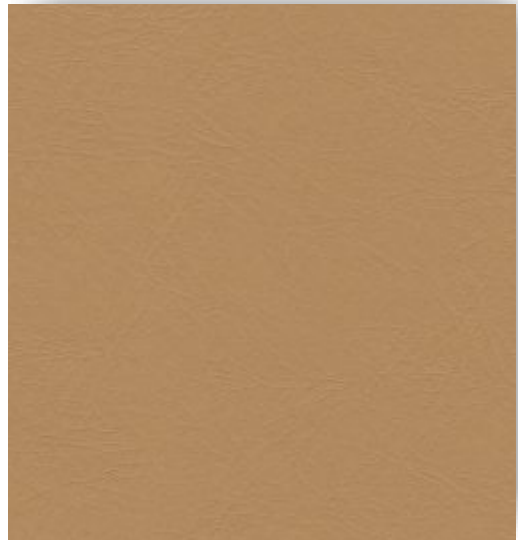
21.7723 *New*



21.7148



21.7708



21.7722 *New*



21.7140



21.7482



21.6441



21.6442



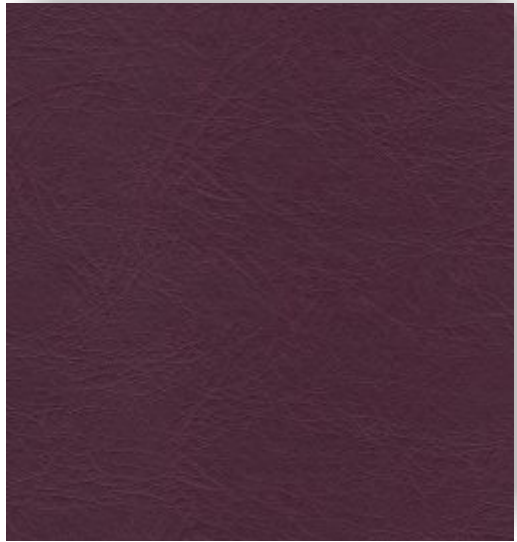
21.6493 *New*



21.9532



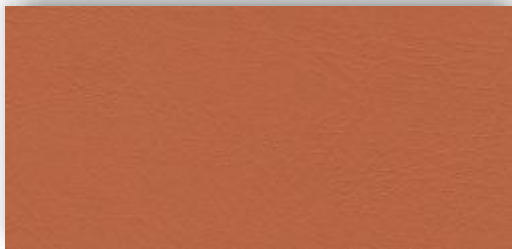
21.9573 *New*



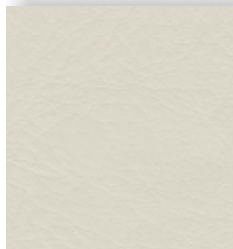
21.9531



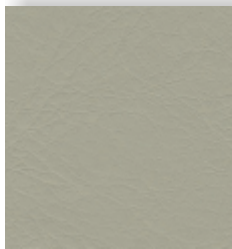
21.9533



21.9527



21.7136



21.7207



21.7206



21.9534