

# Mattress High Care

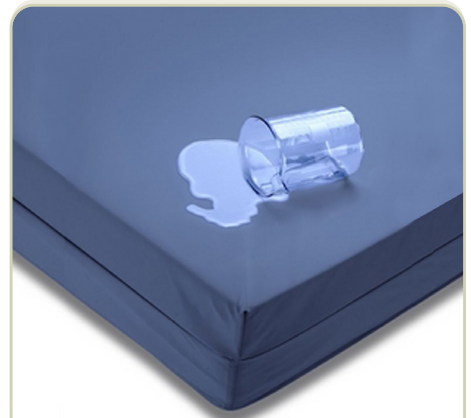
**08831** Highly elastic quality mattress with great comfort designed for use on high/low beds.

## Core

- The core consists of 1 solid block of 12 cm CMHR foam with a density of 50-55 kg/m<sup>3</sup>.
- The polyurethane foam is very elastic, fire retardant and thermosetting.
- The mattress retains its elasticity even after frequent use.
- Bacteriostatic treatment against pathogenic and allergenic micro-organisms.
- Smooth and excellent flexibility for use on an adjustable bed.

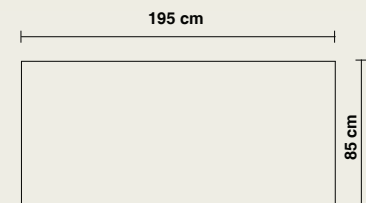
## Cover

- Bi-elastic cover (stretching chain: > 120%, warp: > 130%).
- The weight of the cover is 220 g/m<sup>2</sup>.
- The material of the cover is completely adjusted to optimal pressure distribution and a low frictional resistance.
- The cover is waterproof, vapor permeable, breathable and urine resistant.
- The cover is antimicrobial, hypoallergenic and neutralizes pathogenic micro-organisms and allergens.
- Removable, with zipper on a long and short side for easy replacement.
- Washable at 95 °.



## Dimensions

**08831** | High Care mattress  
- L 195 x W 85 x H 12 cm



## Materials and finishing

- Core: Polyurethane foam CMHR (50-55 kg/m<sup>3</sup>).
- Cover: Bi-elastic, polyurethane coating on a base of polyamide.
- The mattress and the cover meet fire standard CRIB 5.
- The mattress and cover are ecologically produced without CFCs. Neither the production nor the possible destruction processes are environmentally harmful.
- Withstands the common cleaning products.

For more information about the **materials**: please consult our material lists.

